



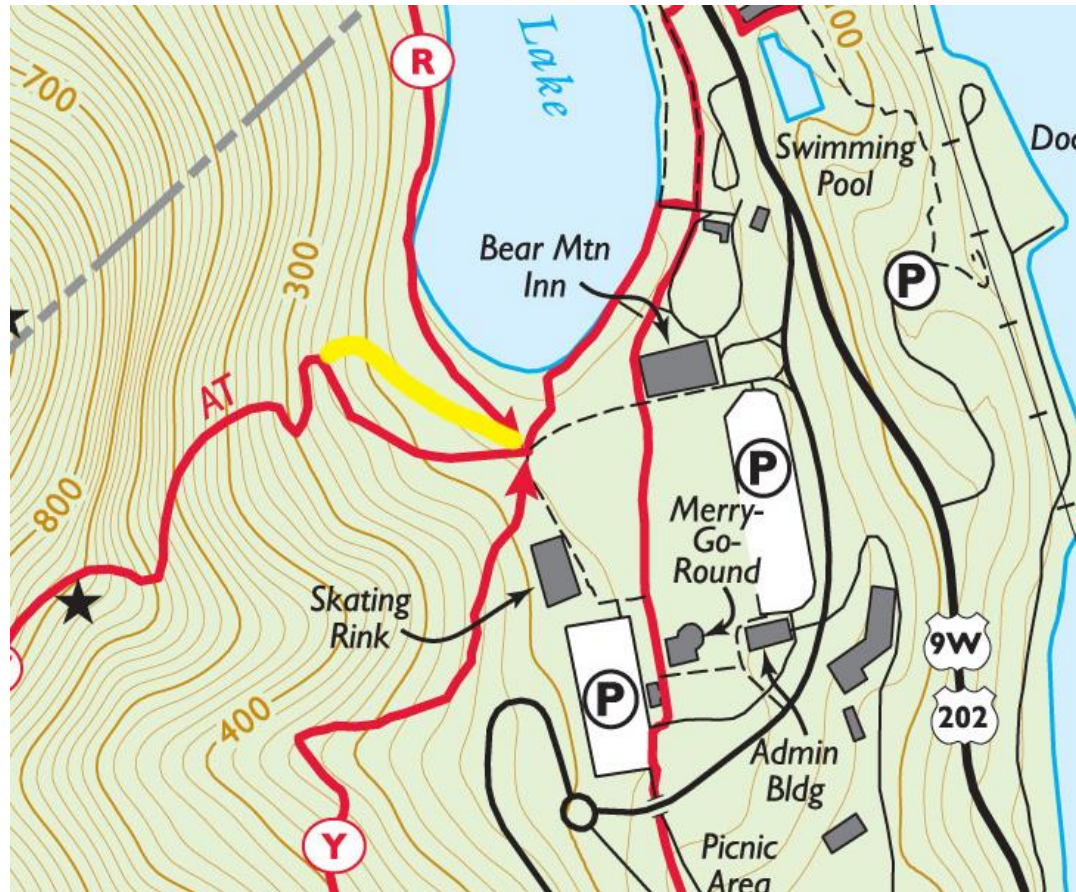
Final Report

Bear Mountain Trails Project: Trails for People I EPF E09067

Prepared By
New York-New Jersey Trail Conference



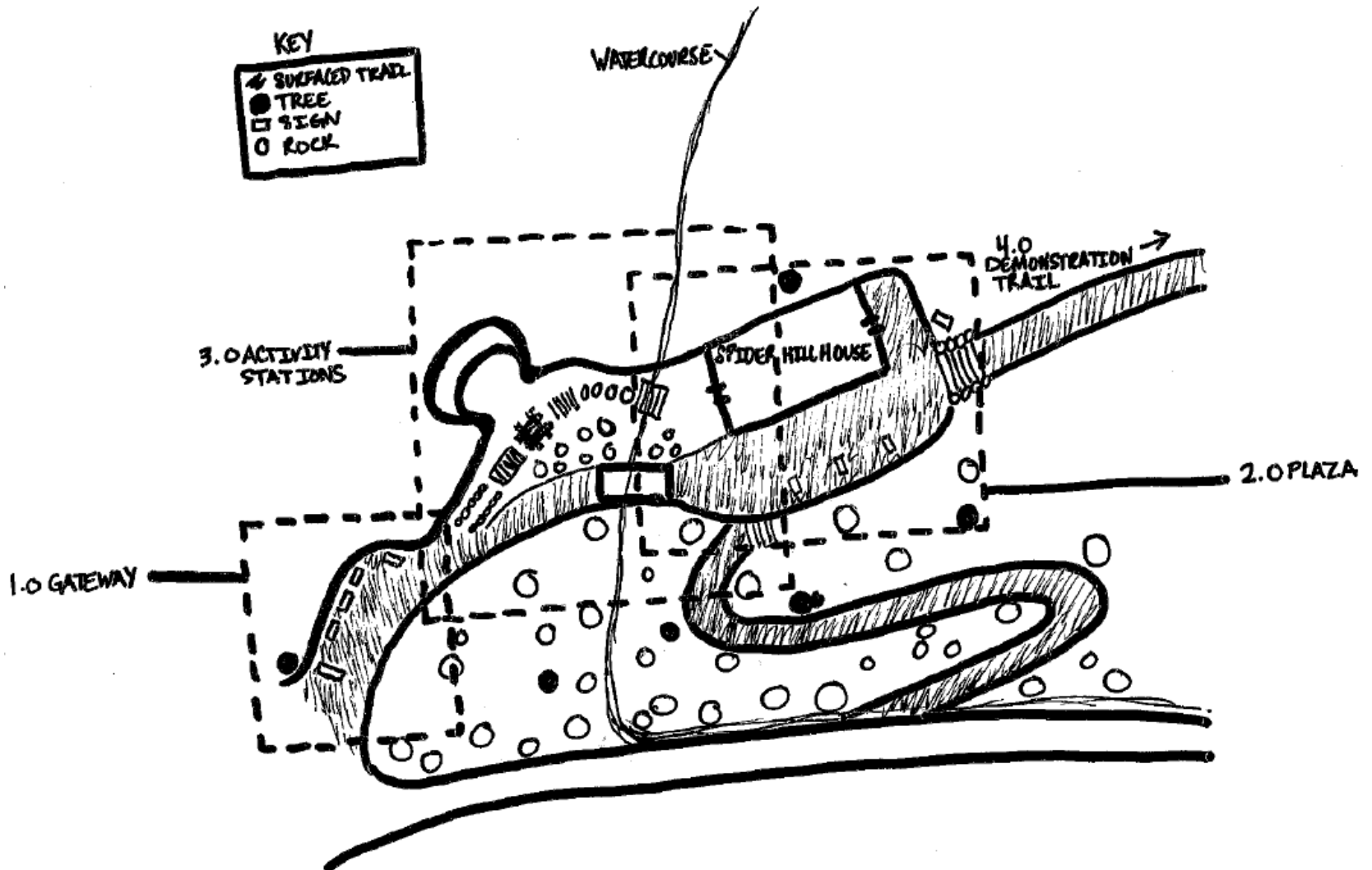
Connecting People with Nature since 1920



Yellow = Demonstration Trail
Red = Existing Trails



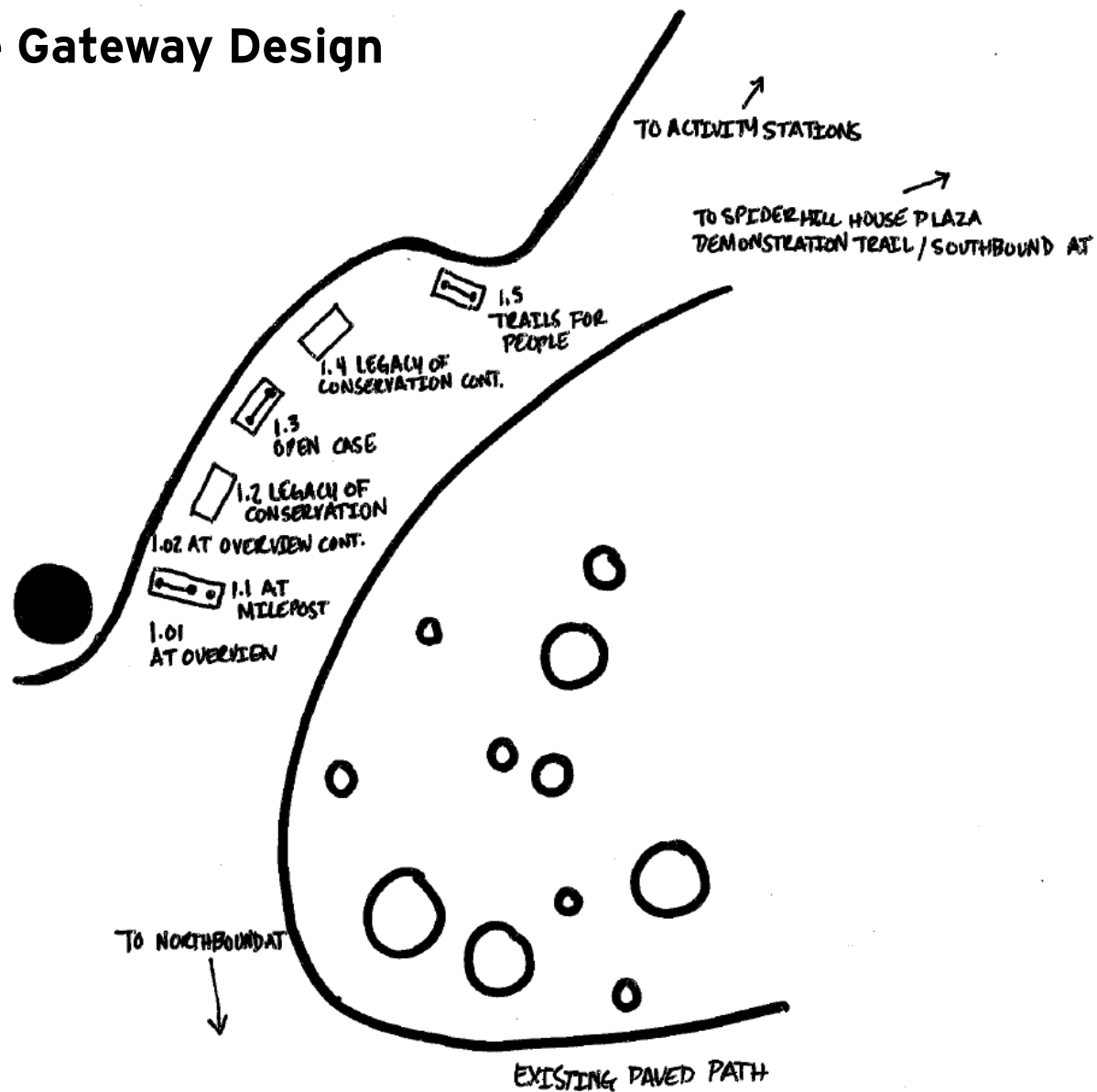
Trails for People Gateway, Plaza, and Activity Station Design





Connecting People with Nature since 1920

Trails for People Gateway Design





Connecting People with Nature since 1920

Volunteer Achievements

Hours of Service

During the period of March 2011 through November 2015 52 individuals volunteered a total of 875 hours





Connecting People with Nature since 1920

Design and Construction Achievements

Design Development

Signage Design Templates Developed
Graphic Panel Copy and Image Guidelines Developed
Design and Dimensional Manual Developed
32 Signage Graphic Panel Production Files Developed

Gateway Tallies

5 Signage Armatures Installed
1 A.T. Milepost Installed
1 Open Bulletin Case Installed

Demo Trail Tallies

857 Linear Feet of Trail
538 Square Feet of Crib Wall
160 Stone Stairs
1 Bridge
9 Signage Armatures Installed at Interpretive Exhibits

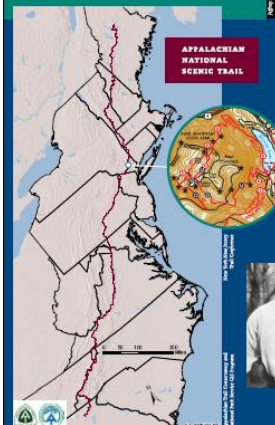
Discover the Appalachian National Scenic Trail

WELCOME TO THE APPALACHIAN TRAIL

You are standing on the Appalachian National Scenic Trail, the most famous hiking trail in the United States—maybe in the world! In 1921, Benton MacKaye, a Massachusetts forester and regional planner, hatched a big idea: a footpath from Maine to Georgia. The Appalachian Trail, he said, would be “a sort of backbone, linking wilderness areas to dwellers in urban areas along the Atlantic Seaboard.” Today, the Trail runs nearly 2,100 miles along the East Coast range known as the Appalachian Mountains.



The Appalachian Trail runs nearly 2,100 miles from Springer Mountain in Georgia to Mount Katahdin in Maine.



BUILT AND MAINTAINED BY VOLUNTEERS

Inspired by MacKaye's vision, hikers and wilderness lovers soon began planning and building the Appalachian Trail (A.T.) with the assistance of the Palisades Interstate Park Commission. In 1923, New York-New Jersey Trail Conference volunteers completed the very first piece of the A.T. here at Bear Mountain. The A.T. is a unit of the National Park System, and is maintained primarily by volunteers who continue to keep the Trail open, safe, and enjoyable for all.



Source: Maj. William A. Welch, who oversaw the construction of the original section of the Appalachian Trail through Bear Mountain and Hartman State Park, designed the “A.T.” arrow and iconic diamond trail marker. Today, the A.T. is marked with white blazes, which are painted on trees and rocks to guide hikers along the path. Two metal diamond markers remain.

Source: Benton MacKaye's desire to build a footpath along the Appalachian Mountains was first detailed in his article “The Appalachian Trail: A Project in Regional Planning,” published in the October 1921 issue of “Journal of the American Institute of Architects.”

PATHWAY TO NATURE'S BEAUTY

Whether you wish just a short section or hike all the way from Maine to Georgia, the Appalachian Trail connects communities and offers people access to scenic beauty, quiet forests, and wildlife habitat along its entire length. The A.T. also links up with thousands of miles of connecting trails. Here in Bear Mountain and Hartman State Parks, you can explore more than 200 miles of trails.



Grab a trail map and explore: Bear Mountain and neighboring Hartman State Park serve as the gateway to more than 30,000 acres of backcountry habitat.



Connecting People with Nature since 1920

Gateway Construction Achievements





Connecting People with Nature since 1920

Gateway Construction Achievements





Connecting People with Nature since 1920

Gateway Construction Achievements





Connecting People with Nature since 1920

Demo Trail Construction Achievements



Station 0-25



Connecting People with Nature since 1920

Demo Trail Construction Achievements



Station 6



Connecting People with Nature since 1920

Demo Trail Construction Achievements



Station 21



Connecting People with Nature since 1920

Demo Trail Construction Achievements



Station 45



Connecting People with Nature since 1920

Demo Trail Construction Achievements



Station 58



Connecting People with Nature since 1920

Demo Trail Construction Achievements



Station 79



Connecting People with Nature since 1920

Demo Trail Construction Achievements



Station 89



Connecting People with Nature since 1920

Demo Trail Construction Achievements



Station 121



Connecting People with Nature since 1920

Demo Trail Construction Achievements



Station 144



Connecting People with Nature since 1920

Demo Trail Construction Achievements



Station 205



Connecting People with Nature since 1920

Demo Trail Construction Achievements



Station 237



Connecting People with Nature since 1920

Demo Trail Construction Achievements



Station 267



Connecting People with Nature since 1920

Demo Trail Construction Achievements



Station 276



Connecting People with Nature since 1920

Demo Trail Construction Achievements



Station 316a



Connecting People with Nature since 1920

Demo Trail Construction Achievements



Station 357



Connecting People with Nature since 1920

Demo Trail Construction Achievements



Station 374



Connecting People with Nature since 1920

Demo Trail Construction Achievements



Station 425a



Connecting People with Nature since 1920

Demo Trail Construction Achievements



Station 448



Connecting People with Nature since 1920

Demo Trail Construction Achievements



Station 468



Connecting People with Nature since 1920

Demo Trail Construction Achievements

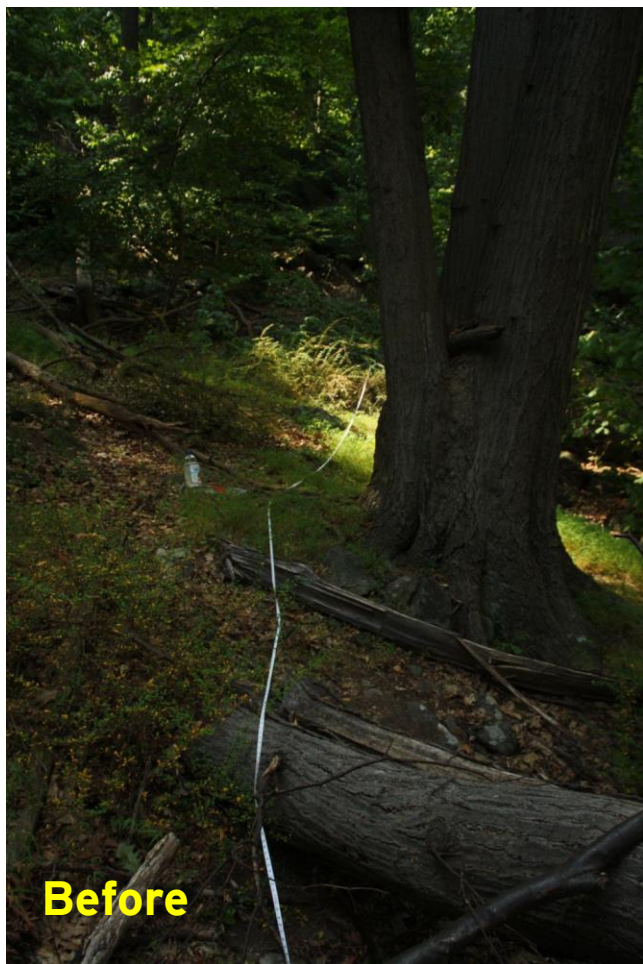


Station 478



Connecting People with Nature since 1920

Demo Trail Construction Achievements



Station 503



Connecting People with Nature since 1920

Demo Trail Construction Achievements



Station 522



Connecting People with Nature since 1920

Demo Trail Construction Achievements



Station 542a



Connecting People with Nature since 1920

Demo Trail Construction Achievements

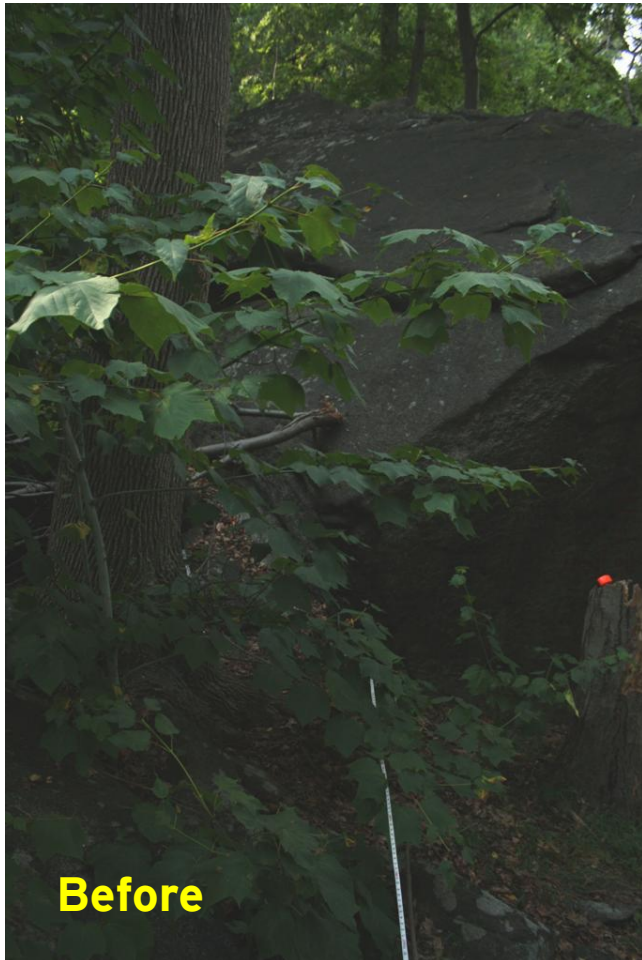


Station 558



Connecting People with Nature since 1920

Demo Trail Construction Achievements

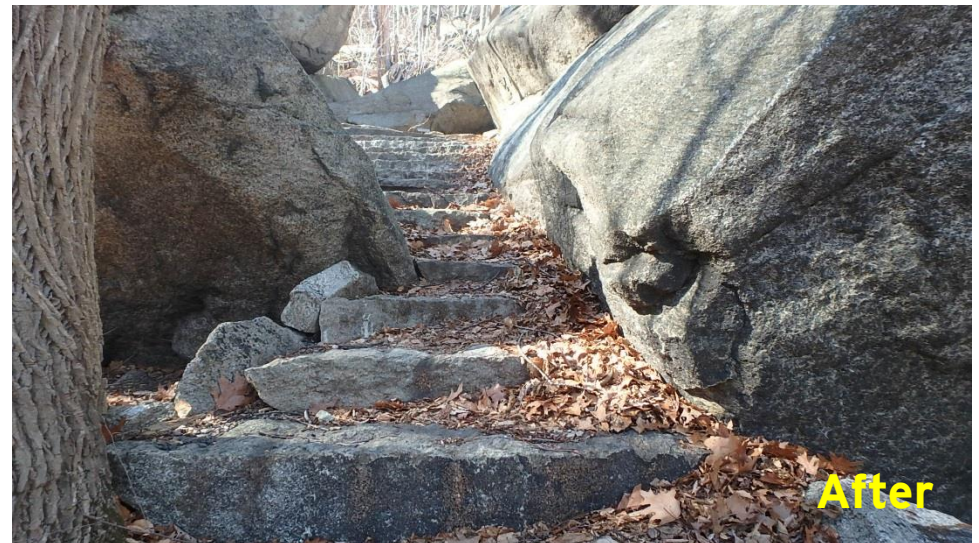
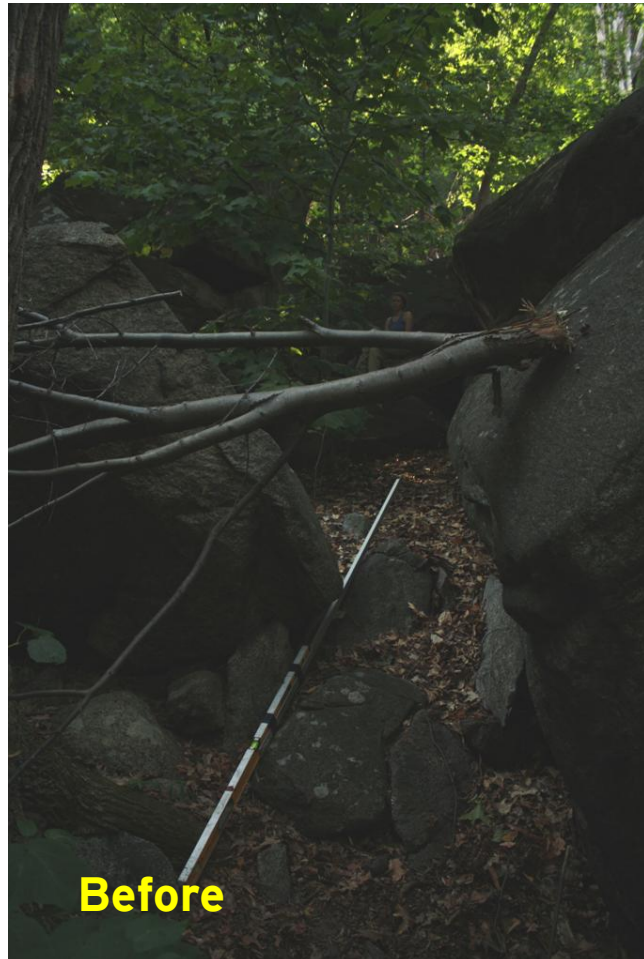


Station 560



Connecting People with Nature since 1920

Demo Trail Construction Achievements



Station 593



Connecting People with Nature since 1920

Demo Trail Construction Achievements

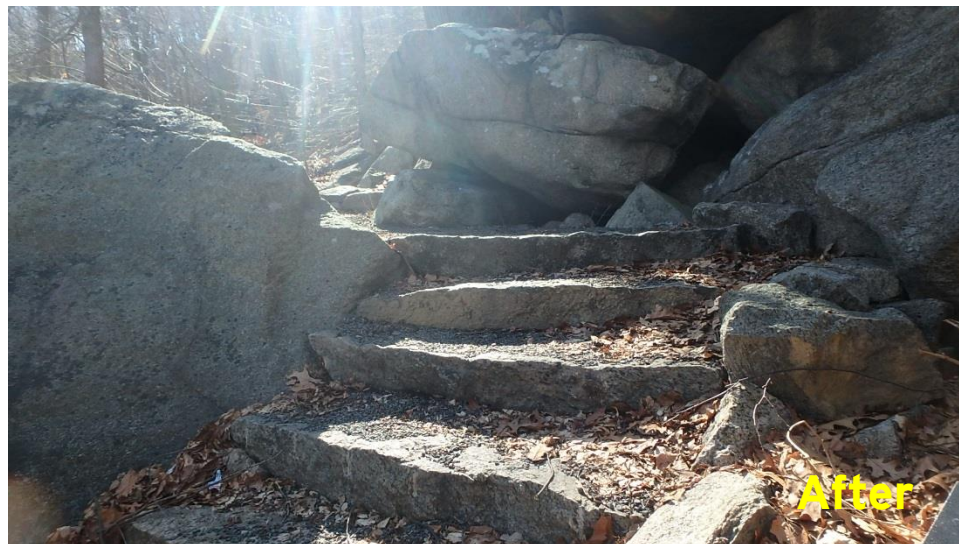
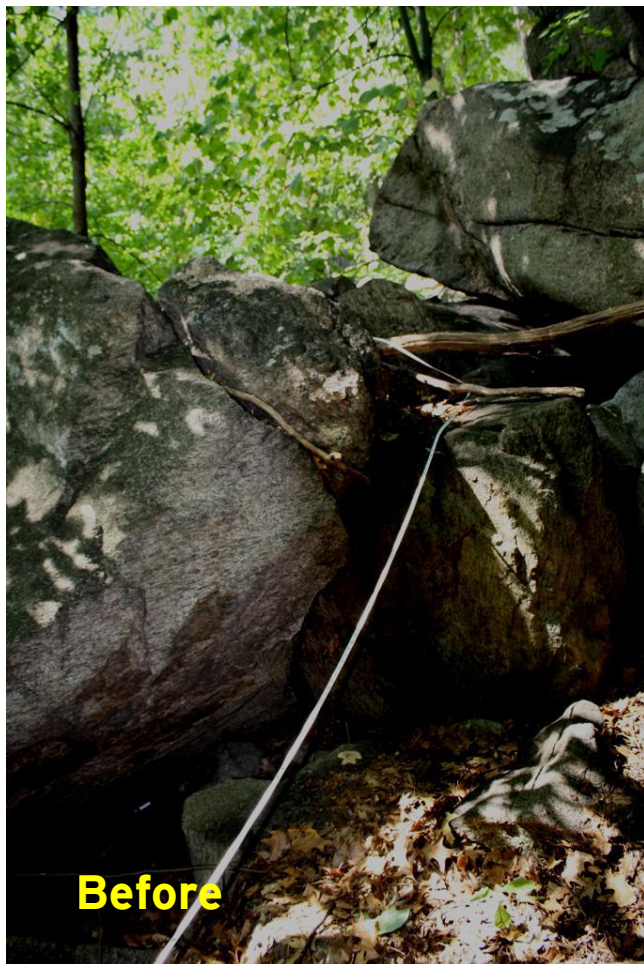


Station 615



Connecting People with Nature since 1920

Demo Trail Construction Achievements



Station 615



Connecting People with Nature since 1920

Demo Trail Construction Achievements



Station 643a



Connecting People with Nature since 1920

Demo Trail Construction Achievements



Station 643b



Connecting People with Nature since 1920

Demo Trail Construction Achievements

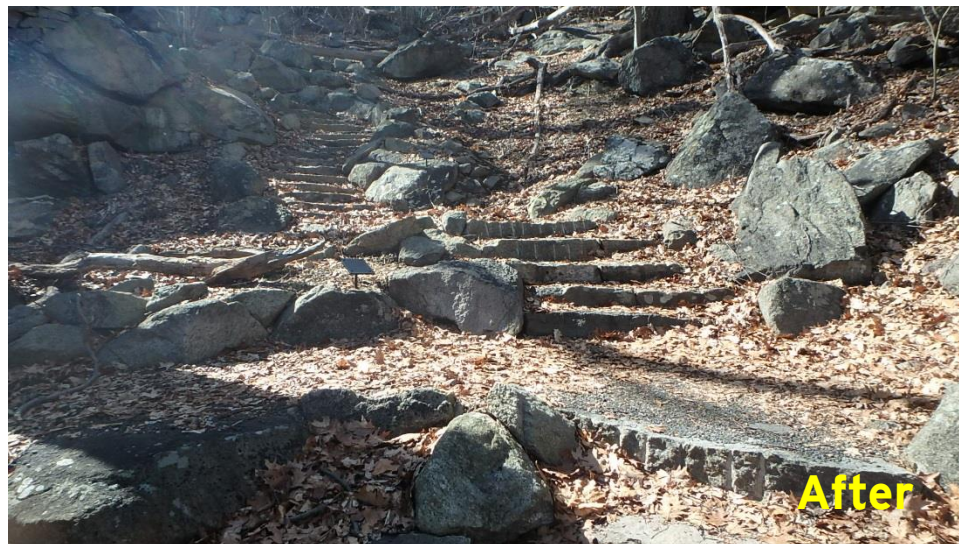


Station 662



Connecting People with Nature since 1920

Demo Trail Construction Achievements

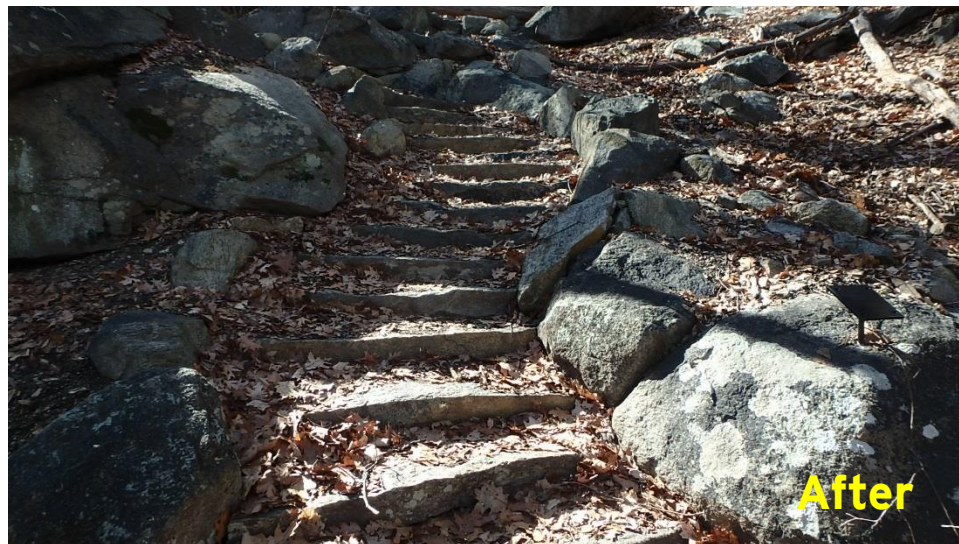


Station 689



Connecting People with Nature since 1920

Demo Trail Construction Achievements



Station 706



Connecting People with Nature since 1920

Demo Trail Construction Achievements

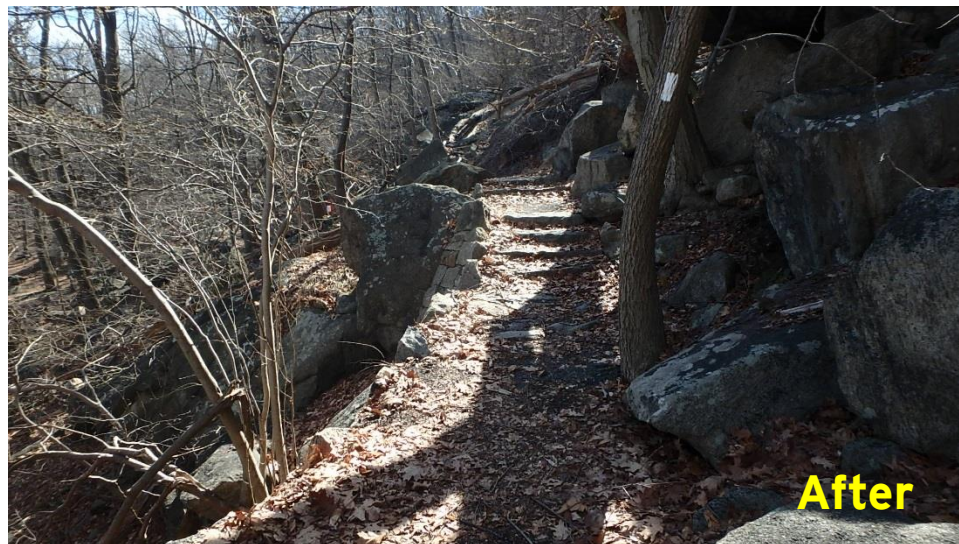


Station 720



Connecting People with Nature since 1920

Demo Trail Construction Achievements



Station 737



Connecting People with Nature since 1920

Demo Trail Construction Achievements



Station 737



Connecting People with Nature since 1920

Demo Trail Construction Achievements



Station 774



Connecting People with Nature since 1920

Demo Trail Construction Achievements

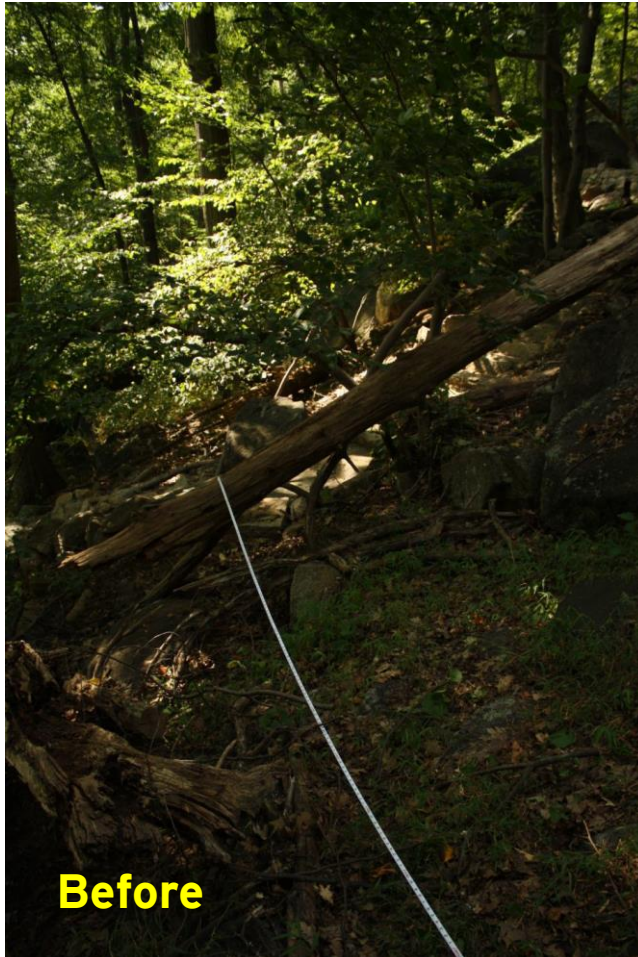


Station 787



Connecting People with Nature since 1920

Demo Trail Construction Achievements

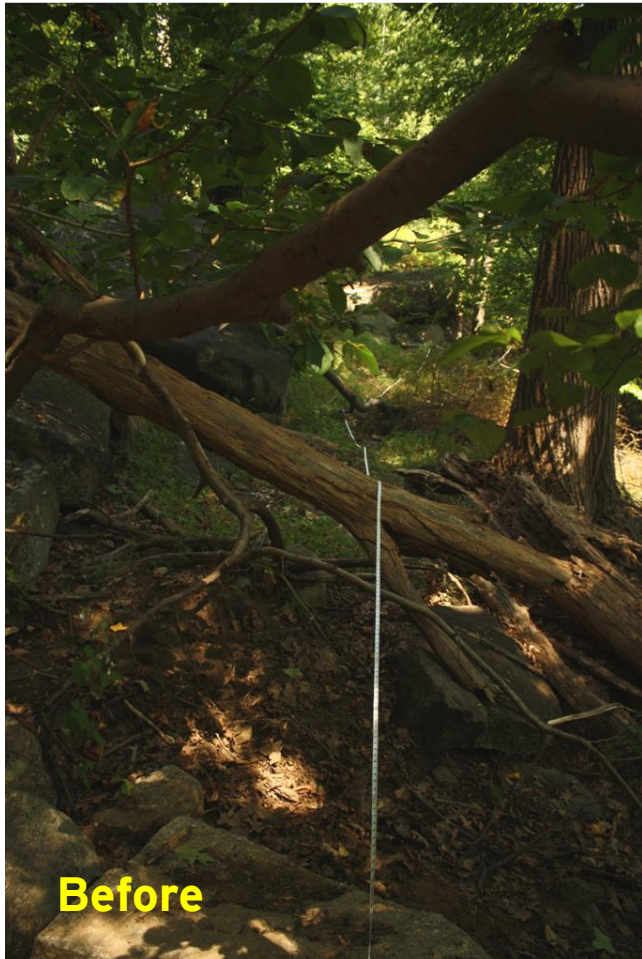


Station 834



Connecting People with Nature since 1920

Demo Trail Construction Achievements



Station 857