



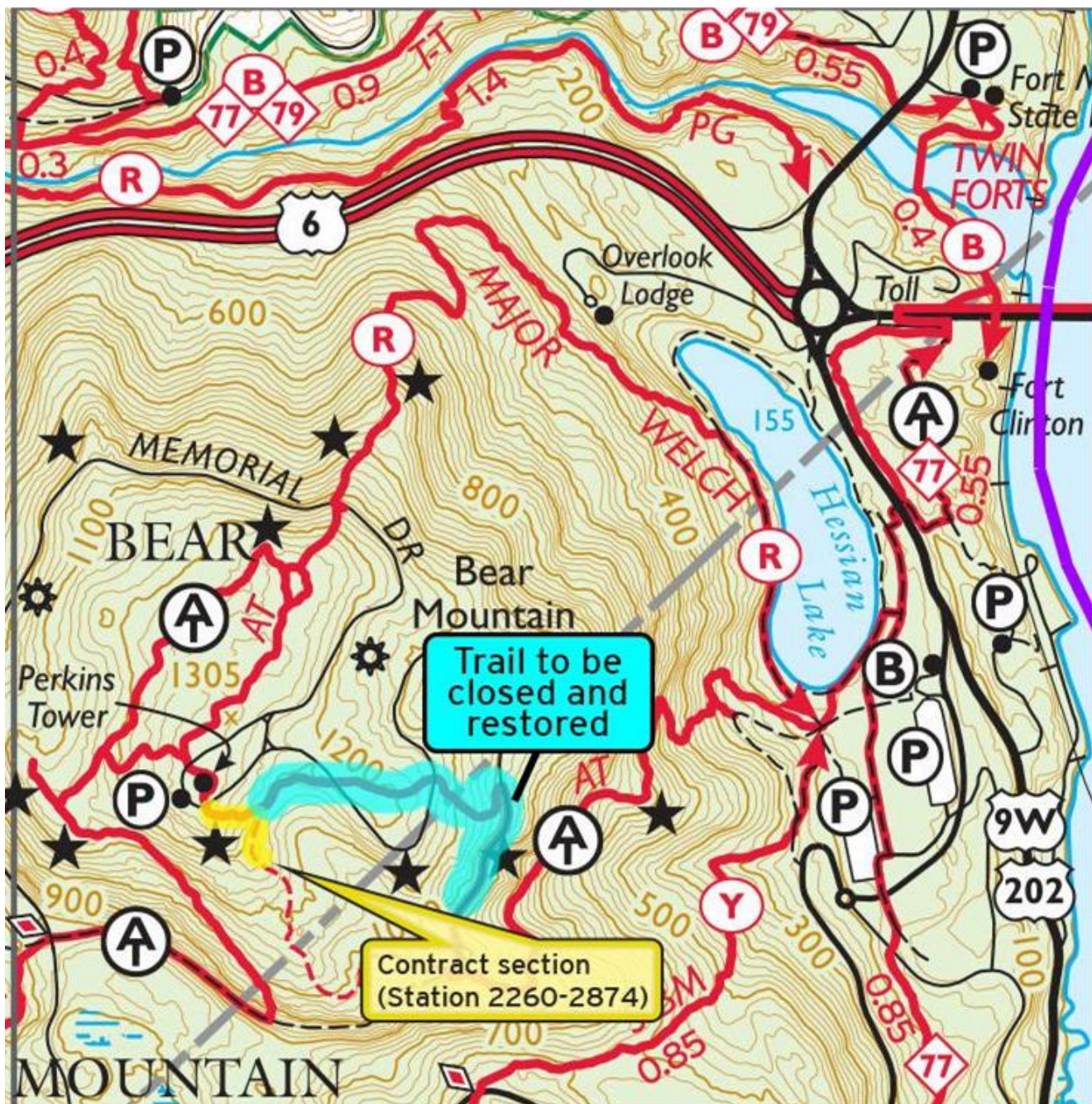
# Trail Closure Work Log Upper East Face Appalachian Trail

February, 2017

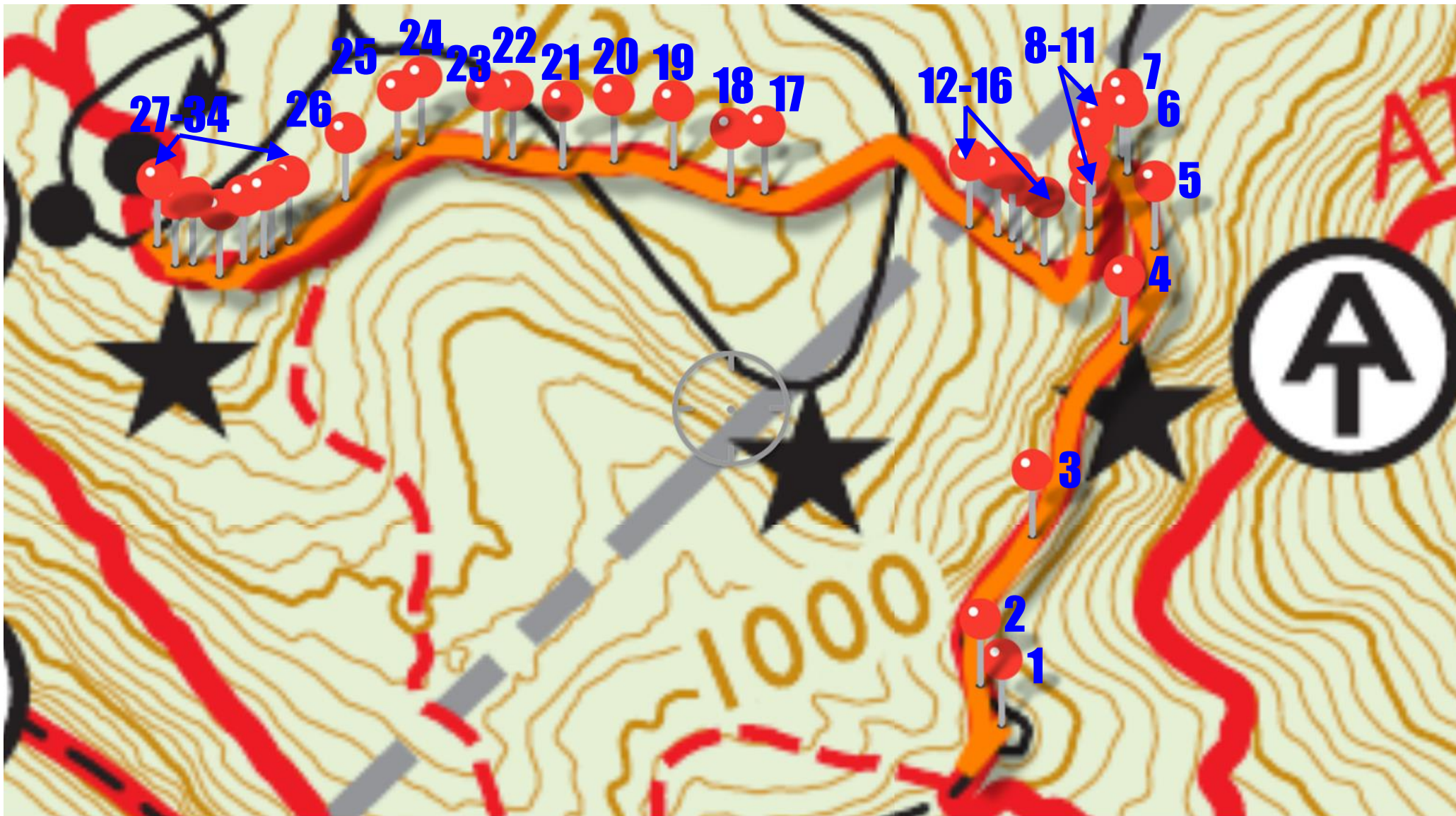
Prepared For  
Bear Mountain Trails Project

Prepared By  
New York-New Jersey Trail Conference











These photo references indicate the location of major work items.

To effectively use this trail closure work log, place yourself approximately where the photographer stood, note the trees, boulders, or other features in the photo and that will help you reference where the trail is to built/improved. Remember you are looking at photos which are in two dimensions and the field situation is in three dimensions. In addition, expect the view to change over time given more vegetation, downed trees, etc.

Arrows point to the approximate location of the work needed, or the location of a singular structure, such as a drainage structure. Two arrows or lines show the approximate start and finish of on-going structures or types of work, such as stone cribbing, stairs, and sidehill.

## General Trail Closure Notes

1. Trail closure will be performed in accordance with New York State Office of Parks Recreation and Historic Preservation Trails Technical Document #3 - Guidelines for Closing and Restoring Trails in NYS Parks found here:

<https://parks.ny.gov/recreation/trails/documents/TrailsTechnicalGuidelinesforClosing.pdf>

2. All materials/plants used will be native. non invasive plant species.

3. Organic materials/duff removed during trail construction will be stockpiled and used in the trail closure process.

4. Safeguards will be made during closure process to protect existing trailside vegetation.

5. Dr. Edwin McGowan of OPRHP has been appointed by park management to specify seed and plant species based on availability and preferences of the park.

## Safety Notes

1. Each day will begin with a safety tailgate meeting outlining environmental, flora, fauna, work, communication, site, and tool related hazards and mitigation practices.

2. Proper personal protective equipment must be worn by all trail workers while on the worksite including long pants, closed-toe shoes, work gloves, eye protection, and hard hats. Ear protection must be worn around power equipment. .





**Trail Closure 1**

Remove all blazes

Re-orient stone stairs to face new trail across the road

Install signage as directed by park

Re-veg off trail/road areas to keep people on trail and reduce erosion on trail below

Replace parapet stones along cul-de-sac to keep vehicles off closed section of old road





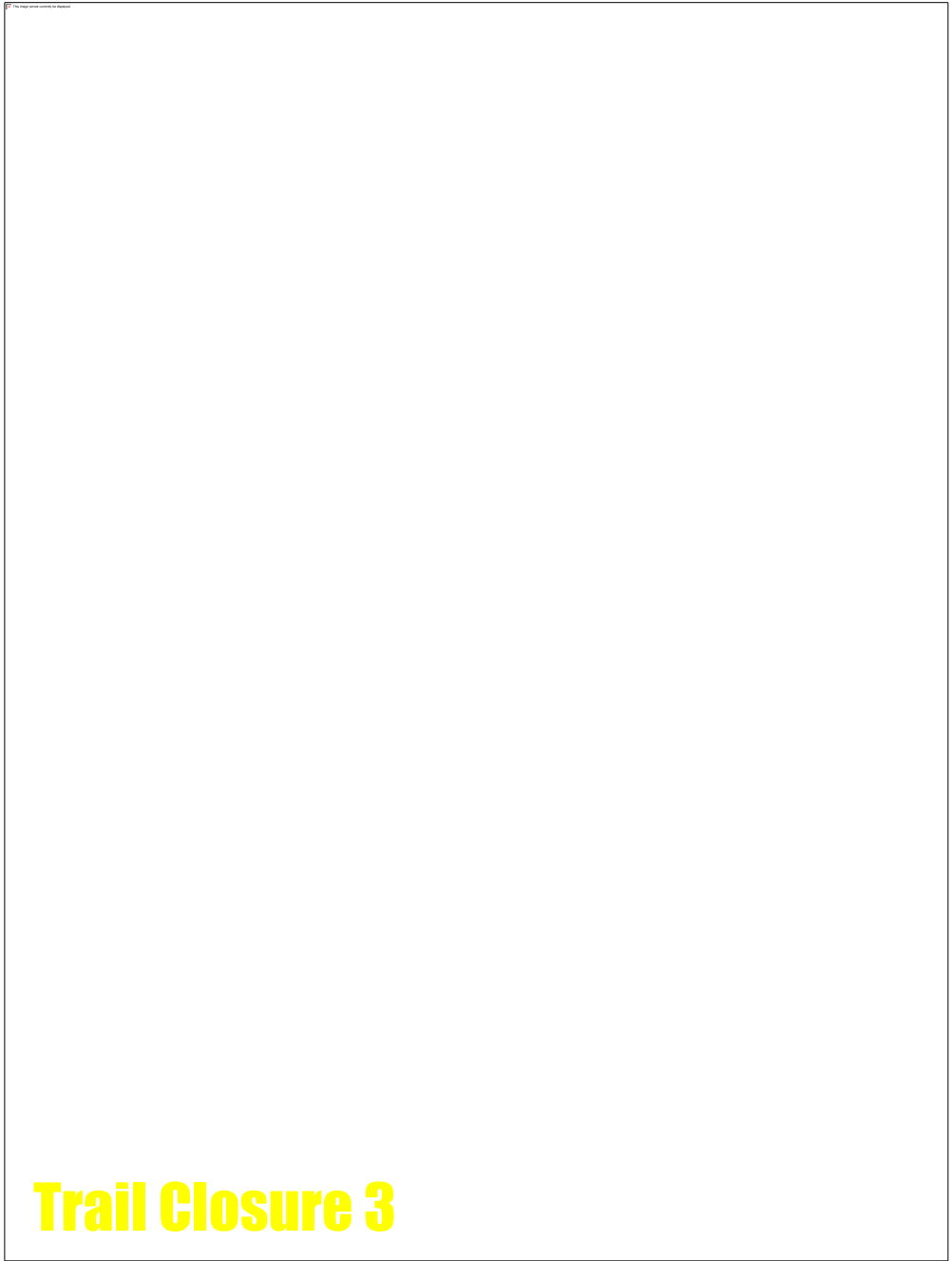
Connecting People with Nature since 1920



Remove all blazes

**Trail Closure 2**





## Trail Closure 3

Remove all blazes





Connecting People with Nature since 1920



**Trail Closure 4**

Remove all blazes





Connecting People with Nature since 1920



**Trail Closure 5**

Remove all blazes

Add organic material, jute net, seed,  
place organic/rock debris to  
camouflage area

Install signage as directed by park





Connecting People with Nature since 1920



**Trail Closure 6**

Remove all blazes

Add organic material, seed, place organic/rock debris to camouflage area





Connecting People with Nature since 1920



**Trail Closure 7**

Remove all blazes

Remove/rearrange existing stone staircase

Add organic material, seed, place organic/rock debris to camouflage area

Install signage as directed by park





## Trail Closure 8

Remove all blazes

Scarify and return slope to natural shape

Add organic material, seed, place organic/rock debris to camouflage area





**Trail Closure 9**

Remove all blazes

Scarify and return slope to natural shape

Add organic material, seed, place organic/rock debris to camouflage area





**Trail Closure 10**

Remove all blazes

Scarify and return slope to natural shape

Add organic material, seed, place organic/rock debris to camouflage area

Multiple social trail area- make sure to close all trails, use large organic debris





**Trail Closure 11**

Remove all blazes

Scarify and return slope to natural shape

Add organic material, seed, place organic/rock debris to camouflage area

Multiple social trail area- make sure to close all trails, use large organic debris





**Trail Closure 12**

Remove all blazes

Scarify and return slope to natural shape

Add check dams to gully

Add organic material, seed, place organic/rock debris to camouflage area





Connecting People with Nature since 1920



**Trail Closure 13**

Remove all blazes

Scarify and return slope to natural shape

Add organic material, seed, place organic/rock debris to camouflage area

Multiple social trail area- make sure to close all trails, use large organic debris





**Trail Closure 14**

Remove all blazes

Add check dams to gullies

Scarify and return slope to natural shape

Add organic material, seed, place organic/rock debris to camouflage area

Multiple social trail area- make sure to close all trails, use large organic debris





**Trail Closure 15**

Remove all blazes

Scarify and return slope to natural shape

Add organic material, seed, place organic/rock debris to camouflage area

Multiple social trail area- make sure to close all trails, use large organic debris





**Trail Closure 16**

Remove all blazes

Scarify and return slope to natural shape

Add organic material, seed, place organic/rock debris to camouflage area

Multiple social trail area- make sure to close all trails, use large organic debris





**Trail Closure 17**

Remove all blazes

Add check dams to gully

Scarify and return slope to natural shape

Add organic material, seed, place organic/rock debris to camouflage area





Connecting People with Nature since 1920



**Trail Closure 18**

Remove all blazes

Add check dams to gully

Scarify and return slope to natural shape

Add organic material, seed, place organic/rock debris to camouflage area





**Trail Closure 19**

Remove all blazes

Scarify and return slope to natural shape

Add organic material, seed, place organic/rock debris to camouflage area





**Trail Closure 20**

Remove all blazes

Scarify and return slope to natural shape

Add organic material, seed, place organic/rock debris to camouflage area

Multiple social trail area- make sure to close all trails, use large organic debris

Install signs as directed by the park





Remove all blazes

Scarify and return slope to natural shape

Add organic material, seed, place organic/rock debris to camouflage area

Multiple social trail area- make sure to close all trails, use large organic debris

Install signs as directed by the park





**Trail Closure 22**

Remove all blazes

Install check dams to slow water flow

Scarify and return slope to natural shape

Add organic material, seed, place organic/rock debris to camouflage area

Multiple social trail area- make sure to close all trails, use large organic debris





Remove all blazes

Scarify and return slope to natural shape

Add organic material, seed, place organic/rock debris to camouflage area

Multiple social trail area- make sure to close all trails, use large organic debris





**Trail Closure 24**

Remove all blazes

Scarify and return slope to natural shape

Add organic material, seed, place organic/rock debris to camouflage area

Multiple social trail area- make sure to close all trails, use large organic debris





## Trail Closure 25

Remove all blazes

Scarify and return slope to natural shape

Add organic material, seed, place organic/rock debris to camouflage area

Multiple social trail area- make sure to close all trails, use large organic debris





**Trail Closure 26**

Remove all blazes

Scarify and return slope to natural shape

Add organic material, seed, place organic/rock debris to camouflage area

Multiple social trail area- make sure to close all trails, use large organic debris





**Trail Closure 27**

Remove all blazes

Install check dams in gullies

Scarify and return slope to natural shape

Add organic material, seed, place organic/rock debris to camouflage area

Multiple social trail area- make sure to close all trails, use large organic debris





**Trail Closure 28**

Trail will be rebuilt in this area to new specifications

Realign all blazes

Scarify and return slope to natural shape

Add organic material, seed, place organic/rock debris to camouflage area

Multiple social trail area- make sure to close all trails, use large organic debris





Trail will be rebuilt in this area to new specifications

Realign all blazes

Scarify and return slope to natural shape

Add organic material, seed, place organic/rock debris to camouflage area

Multiple social trail area- make sure to close all trails, use large organic debris





**Trail Closure 30**

Trail will be rebuilt in this area to new specifications

Realign all blazes

Scarify and return slope to natural shape

Add organic material, seed, place organic/rock debris to camouflage area

Multiple social trail area- make sure to close all trails, use large organic debris





## Trail Closure 31

Trail will be rebuilt in this area to new specifications

Realign all blazes

Scarify and return slope to natural shape

Add organic material, seed, place organic/rock debris to camouflage area

Multiple social trail area- make sure to close all trails, use large organic debris





**Trail Closure 32**

Trail will be rebuilt in this area to new specifications

Realign all blazes

Scarify and return slope to natural shape

Add organic material, seed, place organic/rock debris to camouflage area

Multiple social trail area- make sure to close all trails, use large organic debris





**Trail Closure 33**

Trail will be rebuilt in this area to new specifications

Realign all blazes





**Trail Closure 34**

Trail will be rebuilt in this area to new specifications

Realign all blazes