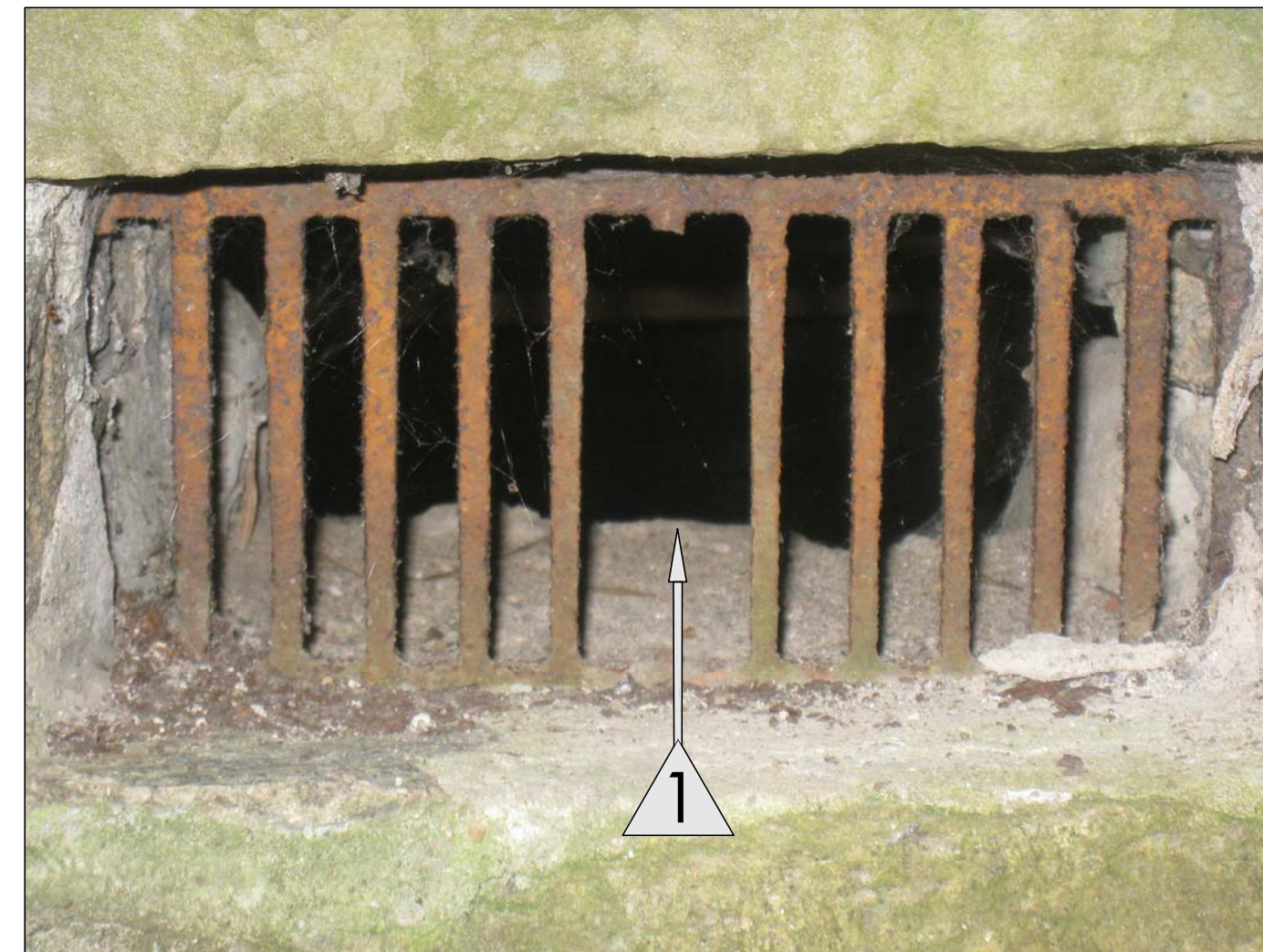




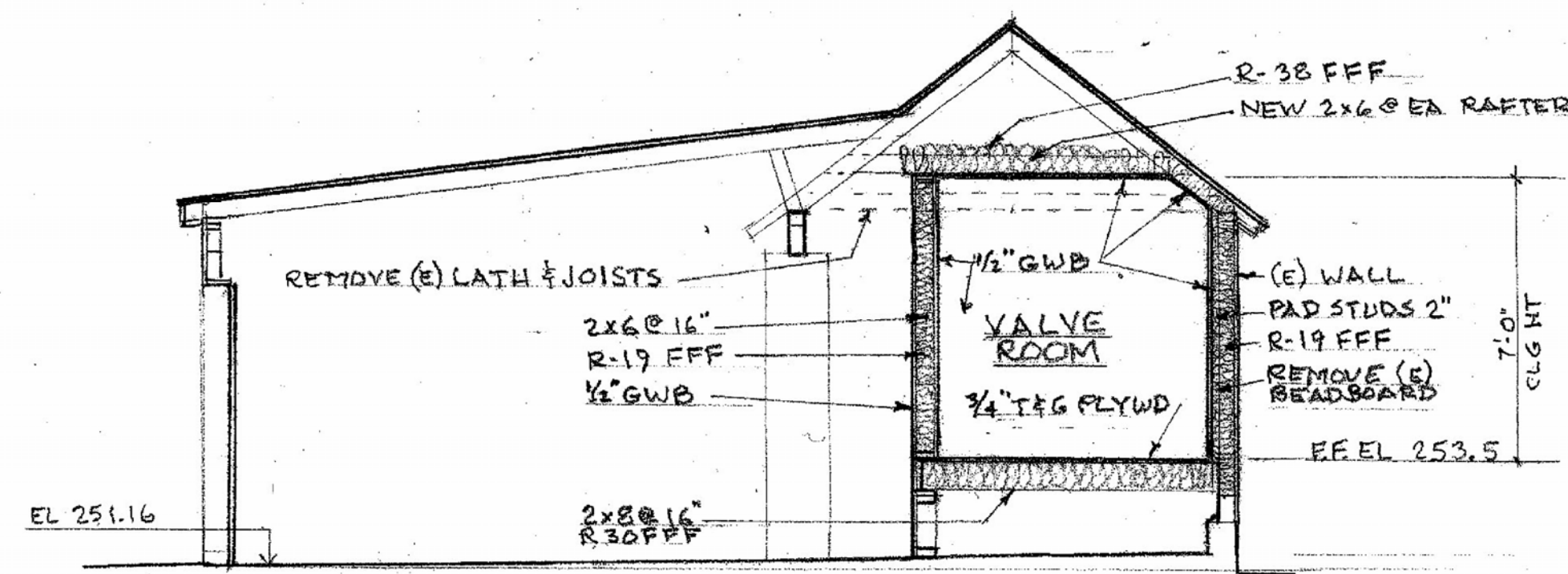
10. BENCH AT FRONT PORCH (TYP. FOR 2)



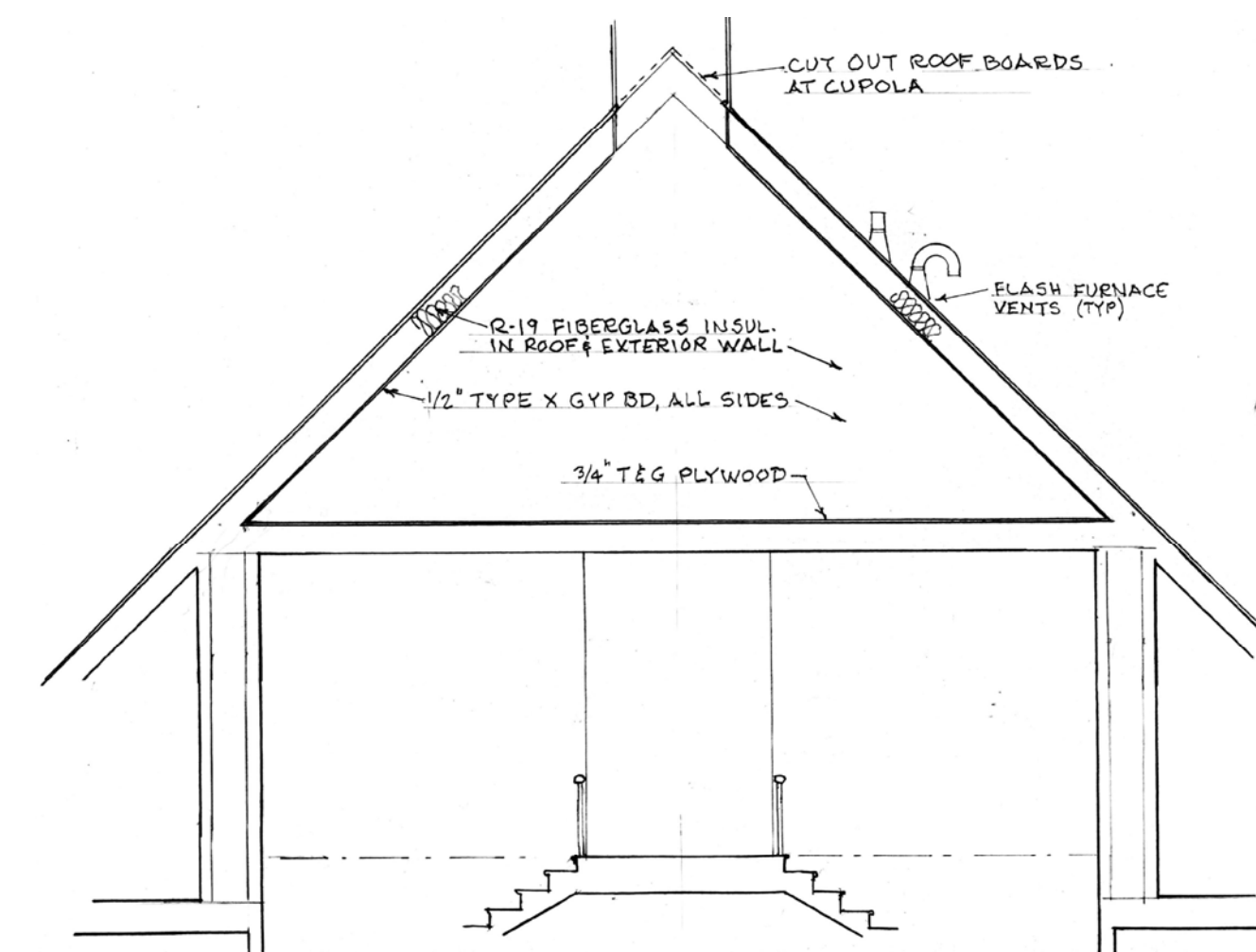
11. FOUNDATION VENT (TYPES VARY)

KEYED NOTES FOR EXTERIOR VIEWS

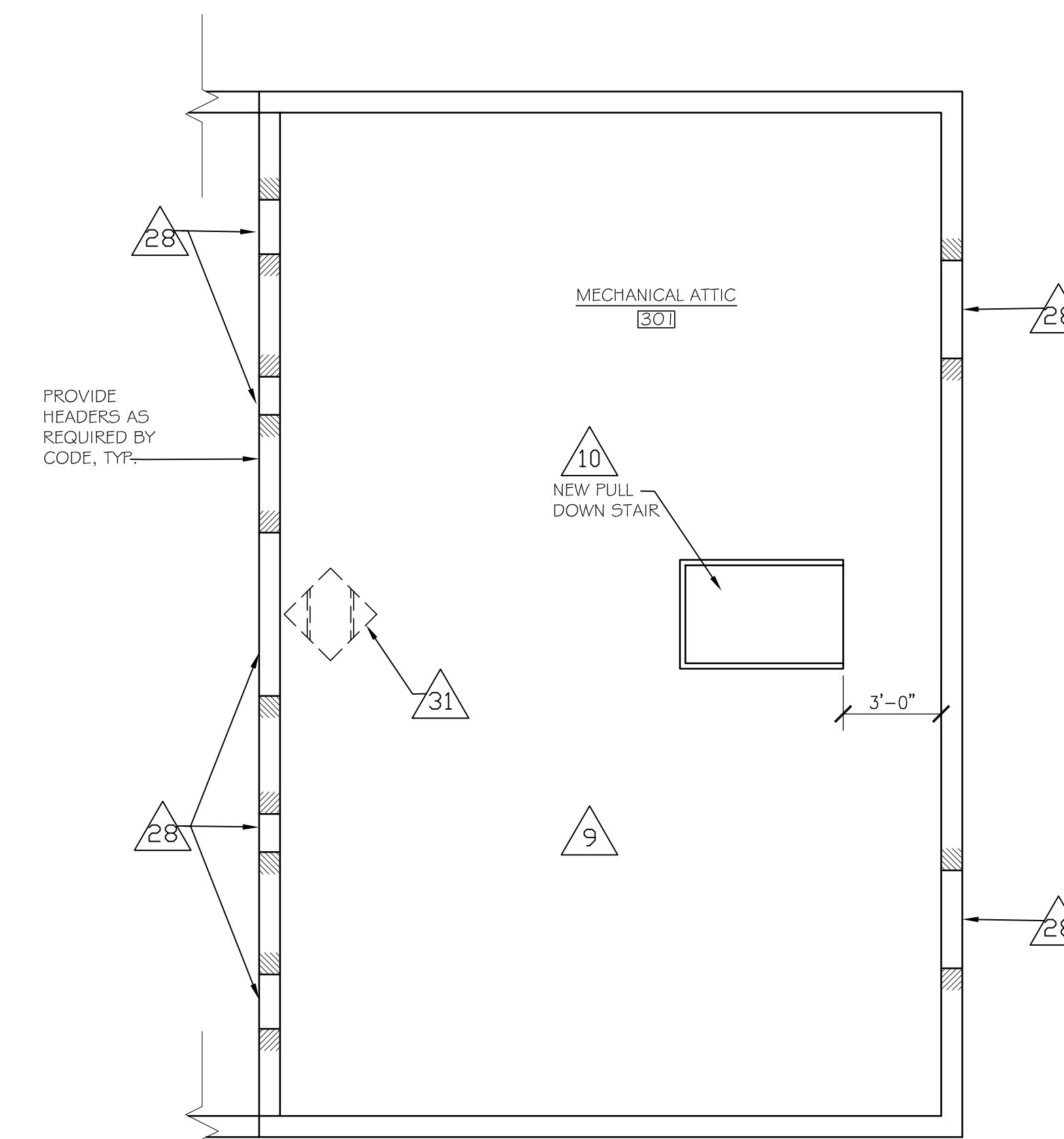
- 1. Repair or replace damaged and missing iron bar grates at foundation vent openings. (4 counted. Bidders verify.) (See Drawing A-5)
- 9. Repair broken legs of benches. (See Drawing A-5)



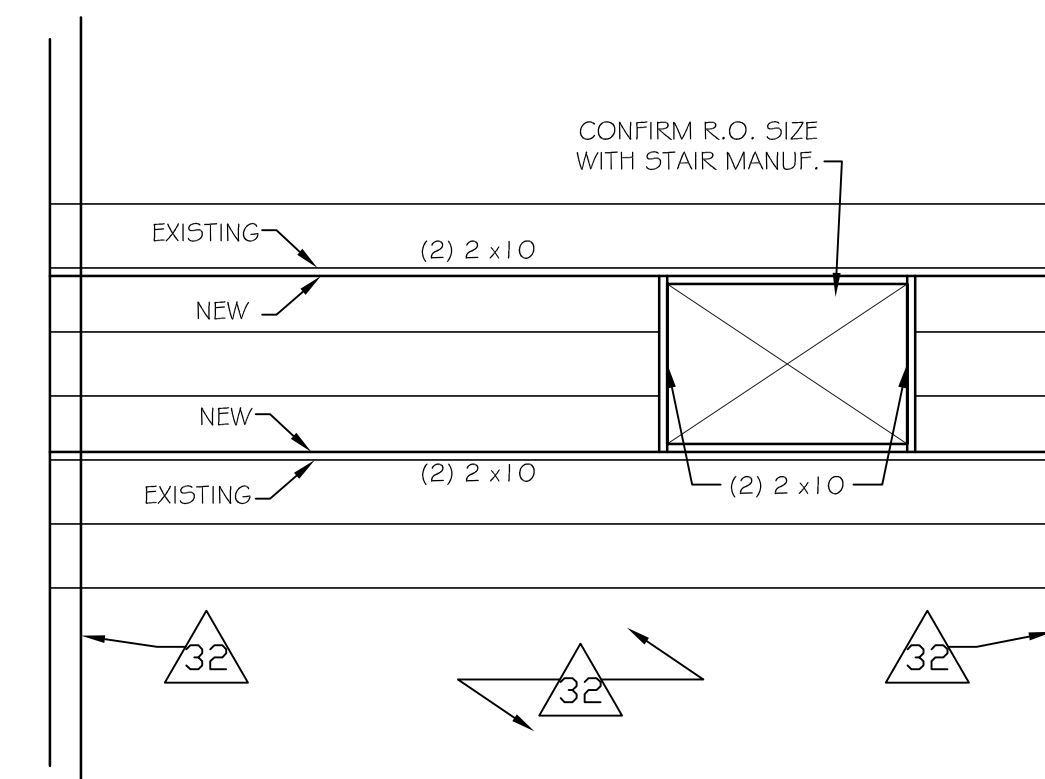
1 SECTION THROUGH GARAGE
A-5 SCALE: 1/4" = 1'-0"



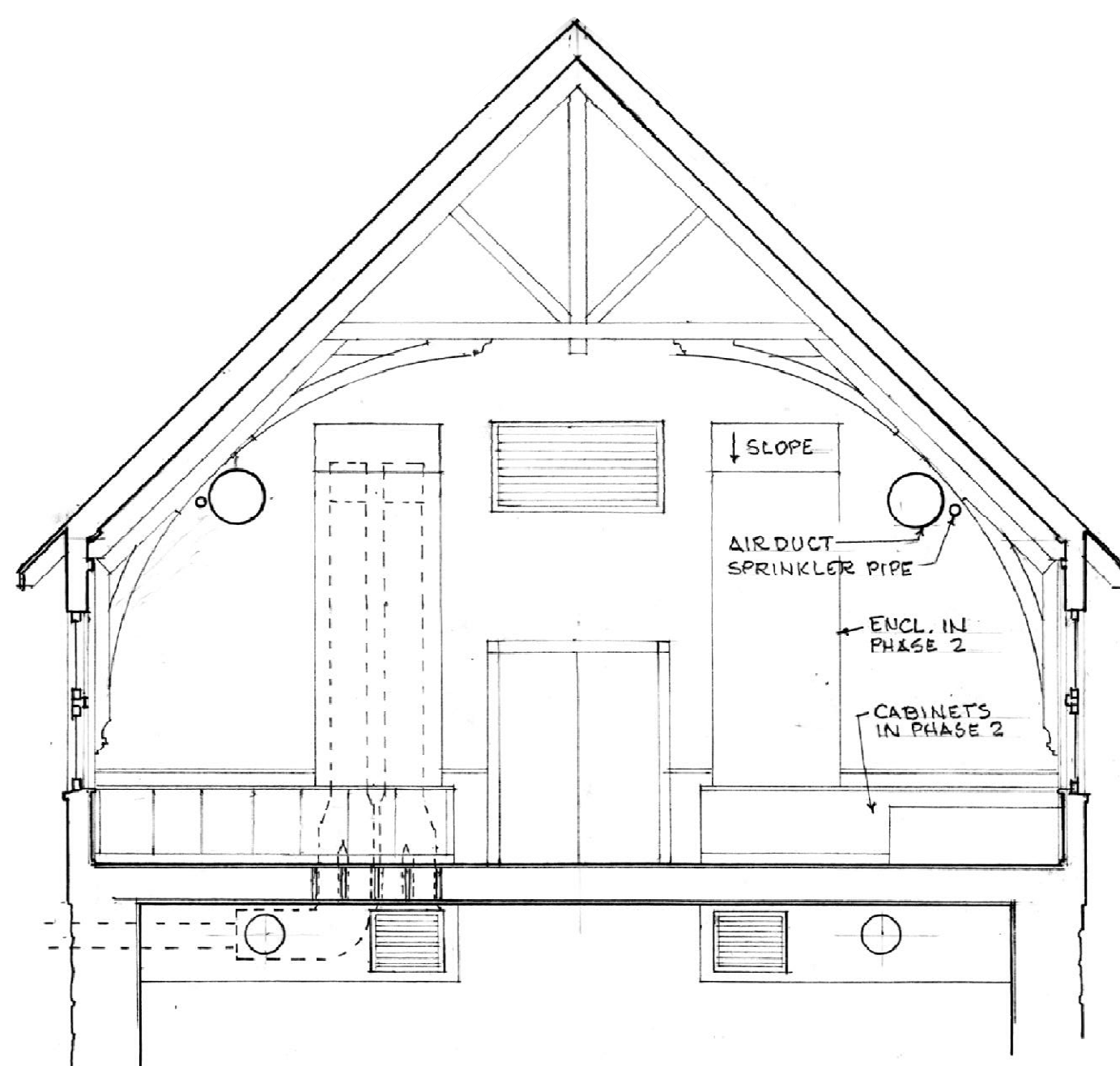
2 SECTION STAIR HALL AND ATTIC
A-5 SCALE: NOT TO SCALE



ATTIC PLAN
SCALE: 1/4" = 1'-0"



ATTIC FLOOR FRAMING PLAN
SCALE: 1/4" = 1'-0"



3 SECTION LOOKING EAST THROUGH ROOM 204
A-5 SCALE: NOT TO SCALE

KEYED NOTES FOR PLANS

- 8. Provide attic floor, 1 layer 3/4 inch Underlayment plywood. See Dwg A-5
- 10. Provide pull-down stair to attic, with safety railing around opening.
- 28. Frame for duct and louver openings. See M drawings.
- 31. Remove roof boarding at cupola.
- 32. Insulate exterior wall and roof with R-19 fiberglass and cover with 1/2" type X gypsum board.

DOOR SCHEDULE		
DOOR No.	REPAIR ALL DAMAGE AND REPLACE AT LEAST THE FOLLOWING PARTS	NOTES
1	LOCK STILE	ENTRANCE
2	2 PANELS	
3		
4*		
5	LOCK STILE, PANELS	EXTERIOR
6*		
7*	HINGE STILE	
8	PANELS	EXTERIOR
9*		
10		
11		
12	NEW DOOR	THERMA TRU
21		
22		
23		
24	(NOT USED)	
25	LOCK STILE	
26		

* DISABLE EXISTING LATCH BOLT

Rehabilitation of the

DARLINGTON SCHOOLHOUSE

600 Ramapo Valley Road, Mahwah NJ 07430

For the
New York-New Jersey Trail Conference
156 Ramapo Valley Road, Mahwah, NJ 07430

COLGAN PERRY LAWLER AURELL ARCHITECTS

118 MAIN STREET
TAPPAN, NEW YORK 10983
845-680-6670 INFO@CPLARCH.COM

DATE: JUNE 14, 2010

DRAWN BY: MCR, WP

CHECKED BY: WP

JOB NO.: 09160.00

DETAILS & MISC

A-5