

Hewitt-Butler Trail Realignment

Norvin Green State Forest
Trail section between WCR trail crossing
and Posts Brook Trailhead

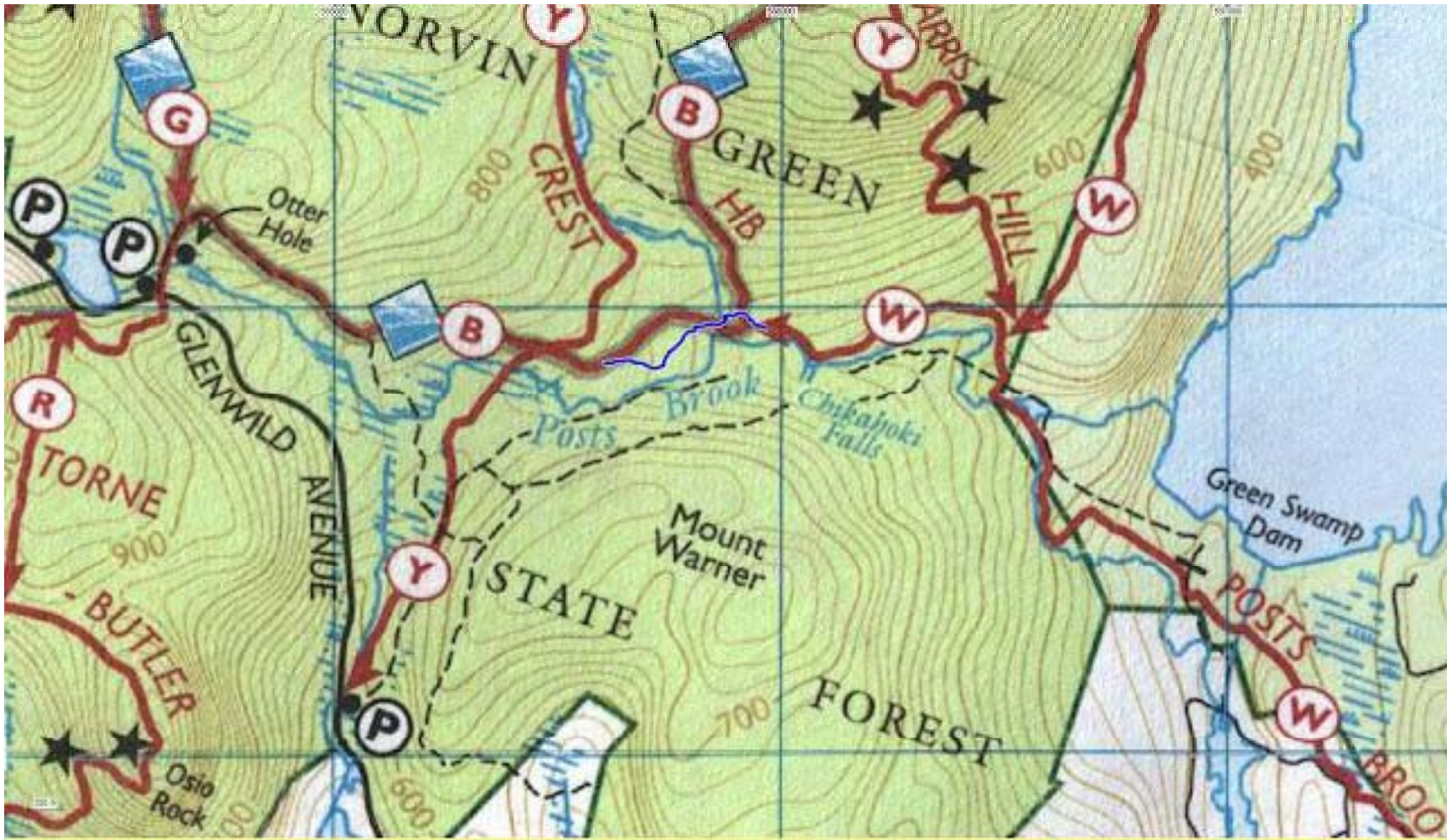
ORIGINAL TRAIL SEGMENT

Eroded
Deteriorated
Gullied
Muddy
Swampy
Uninviting
Difficult



Typical trail conditions now after 5 months of little precipitation

NEW ALIGNMENT



CHANGES REQUIRED

- 0.3MILES ORIGINAL TRAIL TO BE REPLACED
- 0.3MILES NEW TRAIL TO BE CREATED
- EXCEPT FOR ALIGNMENT TRAIL JUNCTIONS REMAIN THE SAME
- NEW TRAIL WILL BE ON HIGHER, DRIER TERRAIN
- DIFFICULT STREAM CROSSING TO BE IMPROVED
- ADDITIONAL VIEWS OF POSTS BROOK ADDED
- TRAIL WILL BE MORE INTERESTING AND PLEASANT
- MAJOR WORK INVOLVES CLEARING SOME DEAD WOOD, RAKING DEBRIS AND BLAZING