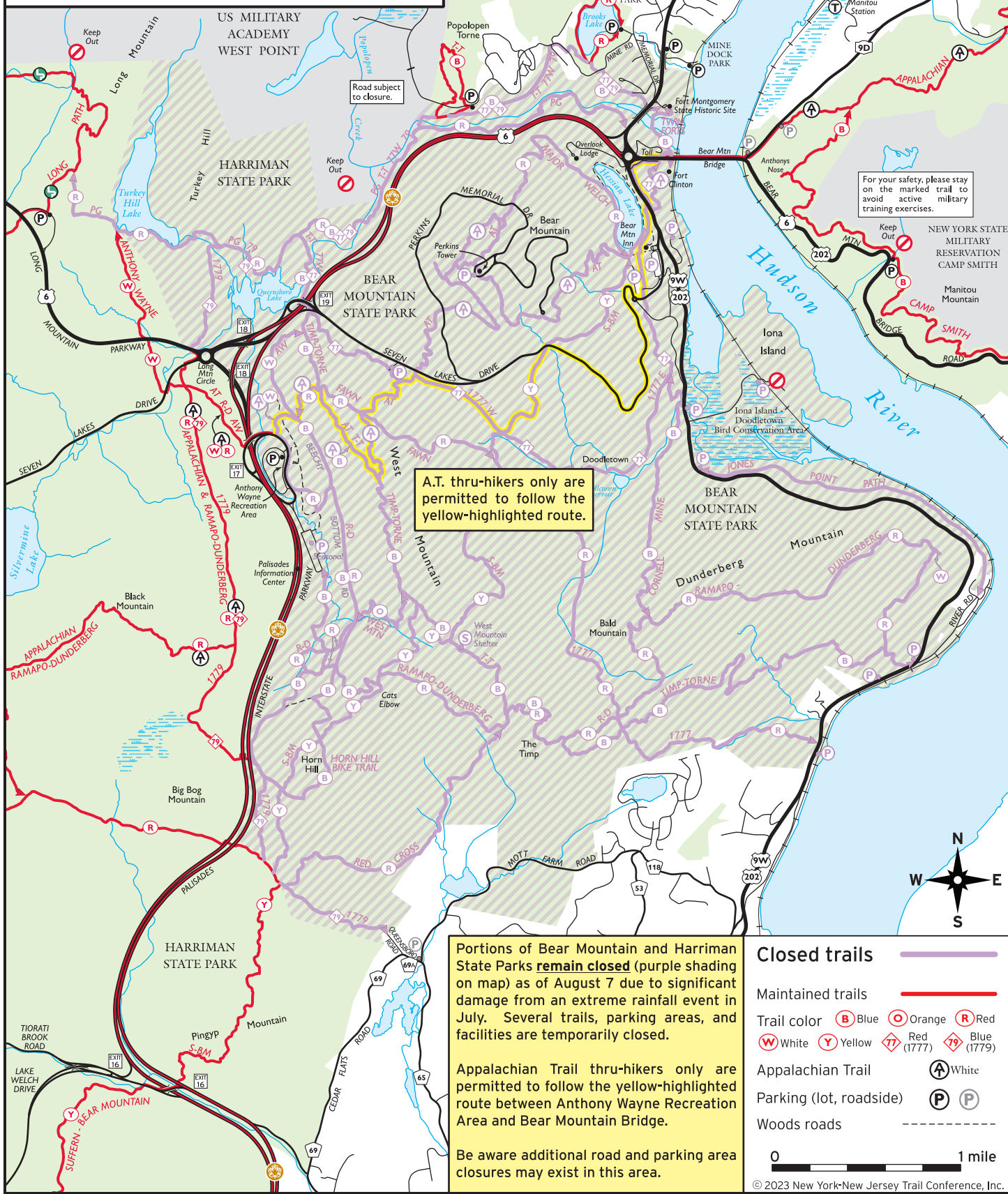




Trail Status

Temporary trail closures in portions of Bear Mountain and Harriman State Parks due to July 2023 storm damage



A.T. thru-hikers only are permitted to follow the yellow-highlighted route.

For your safety, please stay on the marked trail to avoid active military training exercises.

Portions of Bear Mountain and Harriman State Parks **remain closed** (purple shading on map) as of August 7 due to significant damage from an extreme rainfall event in July. Several trails, parking areas, and facilities are temporarily closed.

Appalachian Trail thru-hikers only are permitted to follow the yellow-highlighted route between Anthony Wayne Recreation Area and Bear Mountain Bridge.

Be aware additional road and parking area closures may exist in this area.

- Closed trails**
- Maintained trails**
- Trail color Blue Orange Red
- White Yellow Red (1777) Blue (1779)
- Appalachian Trail White
- Parking (lot, roadside)
- Woods roads

0 1 mile

© 2023 New York-New Jersey Trail Conference, Inc.